

Mini MT Station KMS-820-mini for Electromagnetic methods

Mini Magnetotellurics (MT) station includes

- ◆ 1 KMS-820 acquisition unit
- ◆ 2 pairs of electrodes for E field
- ◆ 1 **3C digital fluxgate KMS-029** for H field
 - 3-axis magnetic field measurement
 - 32-bit ADC high resolution

Applications:

- ❖ Hydrocarbon exploration
- ❖ Shale reserves applications (E&P)
- ❖ Reservoir monitoring
- ❖ Geothermal exploration
- ❖ Sub-basalt, sub-salt, overthrust, reef exploration
- ❖ Engineering & environmental studies
- ❖ Earthquake monitoring/prediction
- ❖ Deep crustal research

Mini MT Station



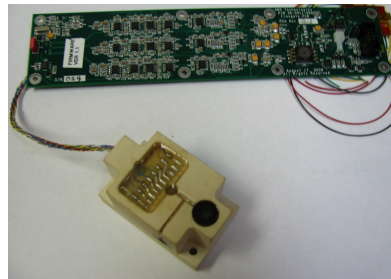


Electromagnetic acquisition system KMS-820-mini

Product features

- ❖ COMPLETE EM system with MT software
- ❖ Cost saving with one 3-axis fluxgate, instead of 3 separate coil magnetometers
- ❖ Light weight and small package for easy field transportation.
- ❖ Easy sensor set up, significantly reduced sensor deployment time
- ❖ Bandwidth (DC-180 Hz) for various geophysical methods
- ❖ Extremely low noise at low frequencies for crustal soundings

KMS-029 fluxgate board & sensor



Houston:
6420 Richmond Ave., Suite 610
Houston, Texas 77057
Tel.: USA +1.713.532.8144 Fax+1.832.204.8418
Email: info@KMSTechnologies.com

Germany:
KMS Technologies GmbH
Eupener Strasse 137, Suites 214 - 216
50933 Cologne, Germany
Tel.: Germany +49.221.952.79794